

How to Open, Scale and Save Using LT Image

Once your observation has been completed by the telescope you will be able to download it from the NSO website, but you'll then need LT Image to view and process the image.

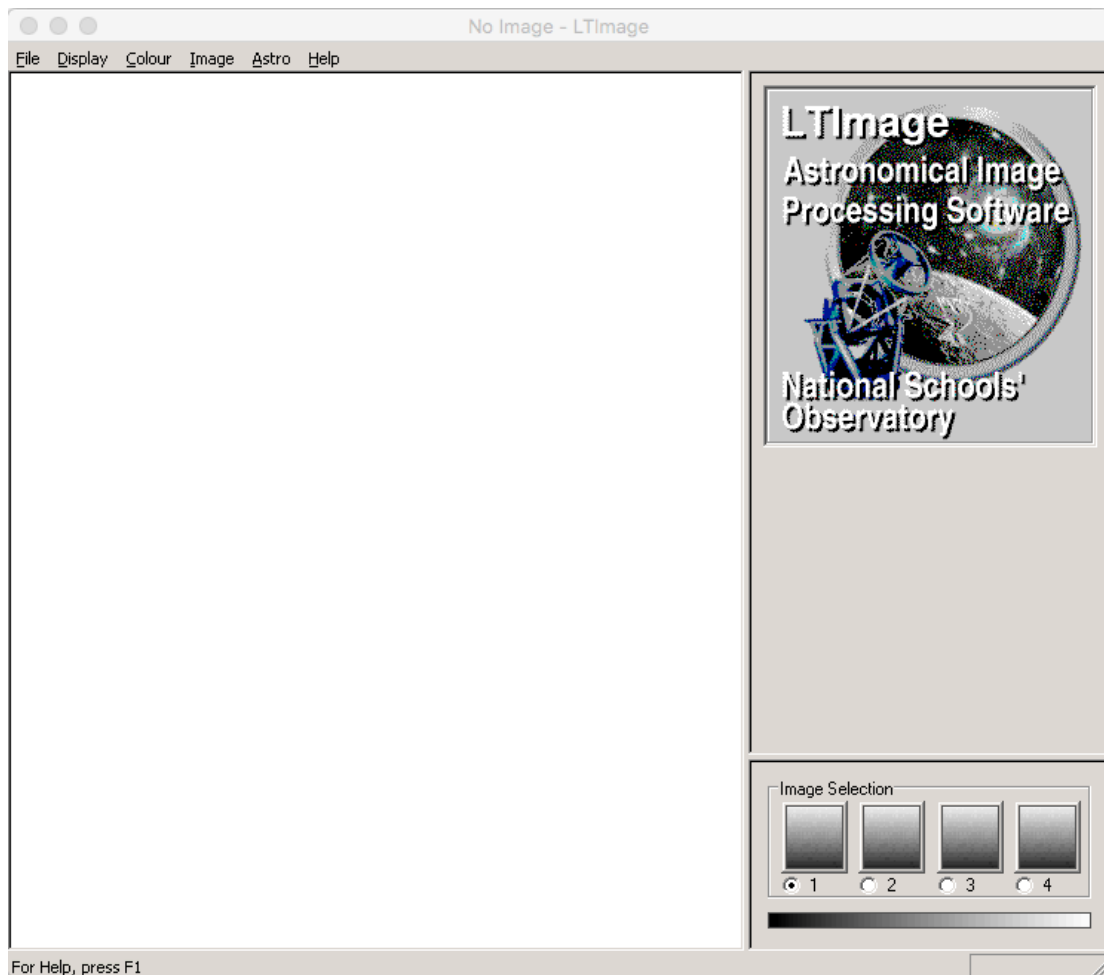
Stages:

1. Load the image
2. Go to the scaling option
3. Adjust the maximum control
4. Save your image

1. Loading The Image

Once the telescope has taken your observation you will be able to download the file from the 'My Observations' section of the website. This file will be a .fits file. We can then view this using LT Image which can be downloaded from the NSO website.

Upon opening LT Image you will see several options at the top of the window:

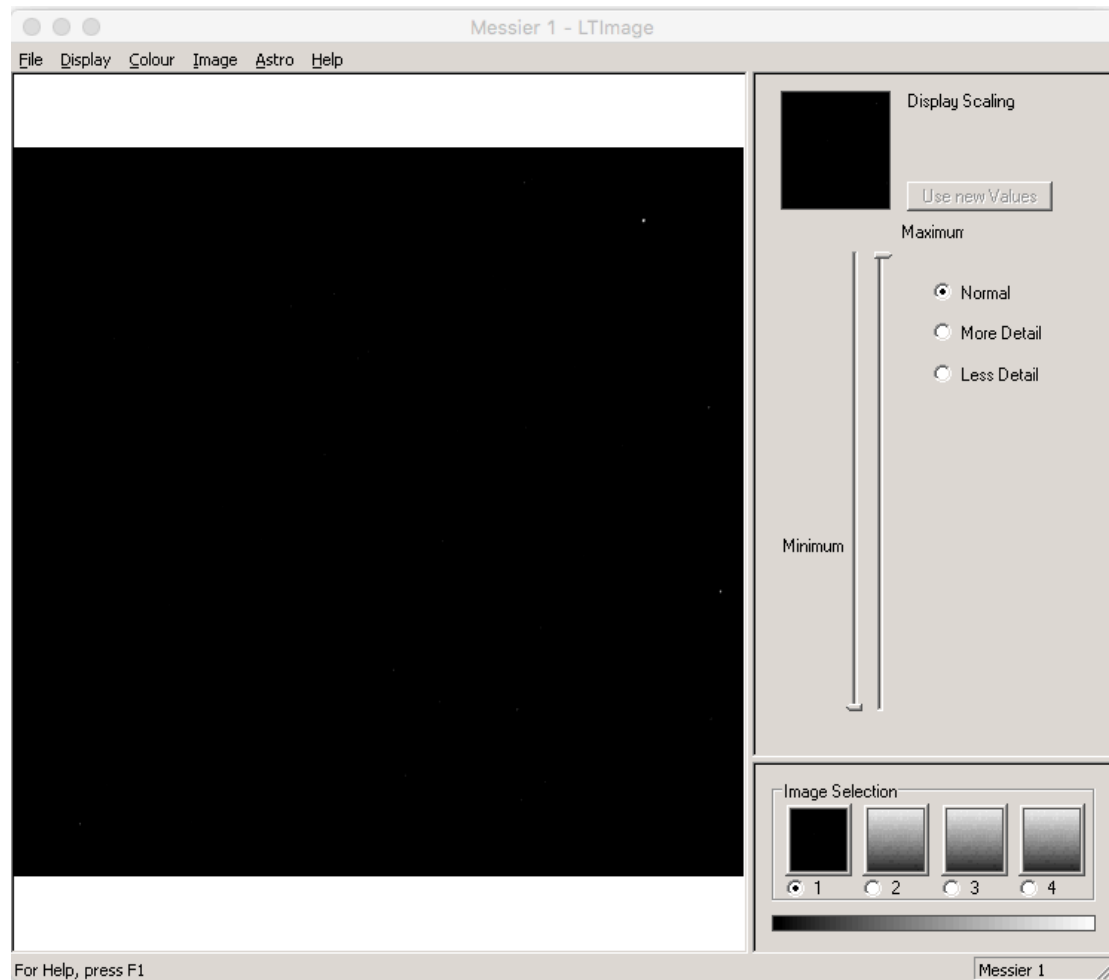


Click 'File' and select 'Open Data Image' and then select the .fits file you wish to work with.

2. Go To The Scaling Option

Once you have opened your image you will see a very black image with perhaps just a few white stars visible. We need to use LT Image to process the image, by scaling it.

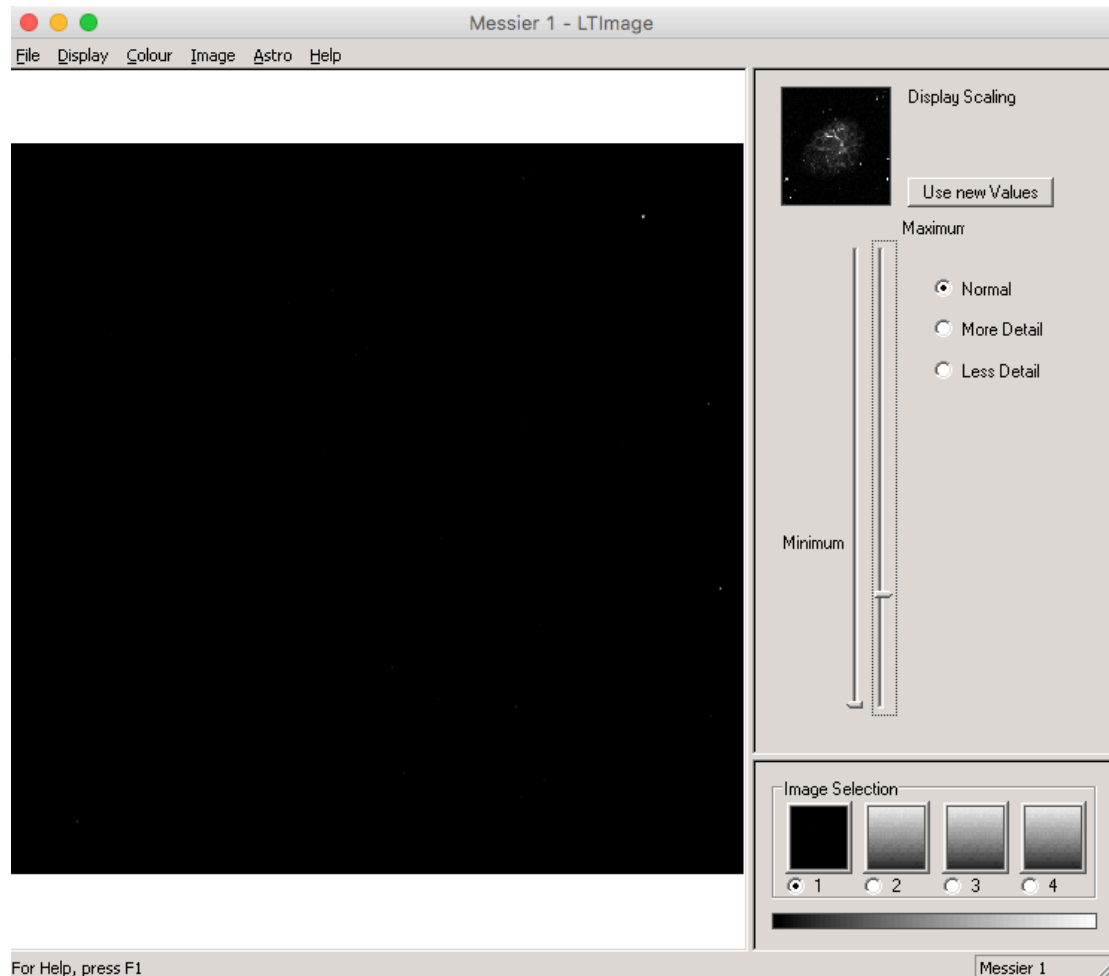
From the options at the top of the window, select 'Display' then 'Scaling' and you will notice that two sider bars have appeared on the right hand side of the window:



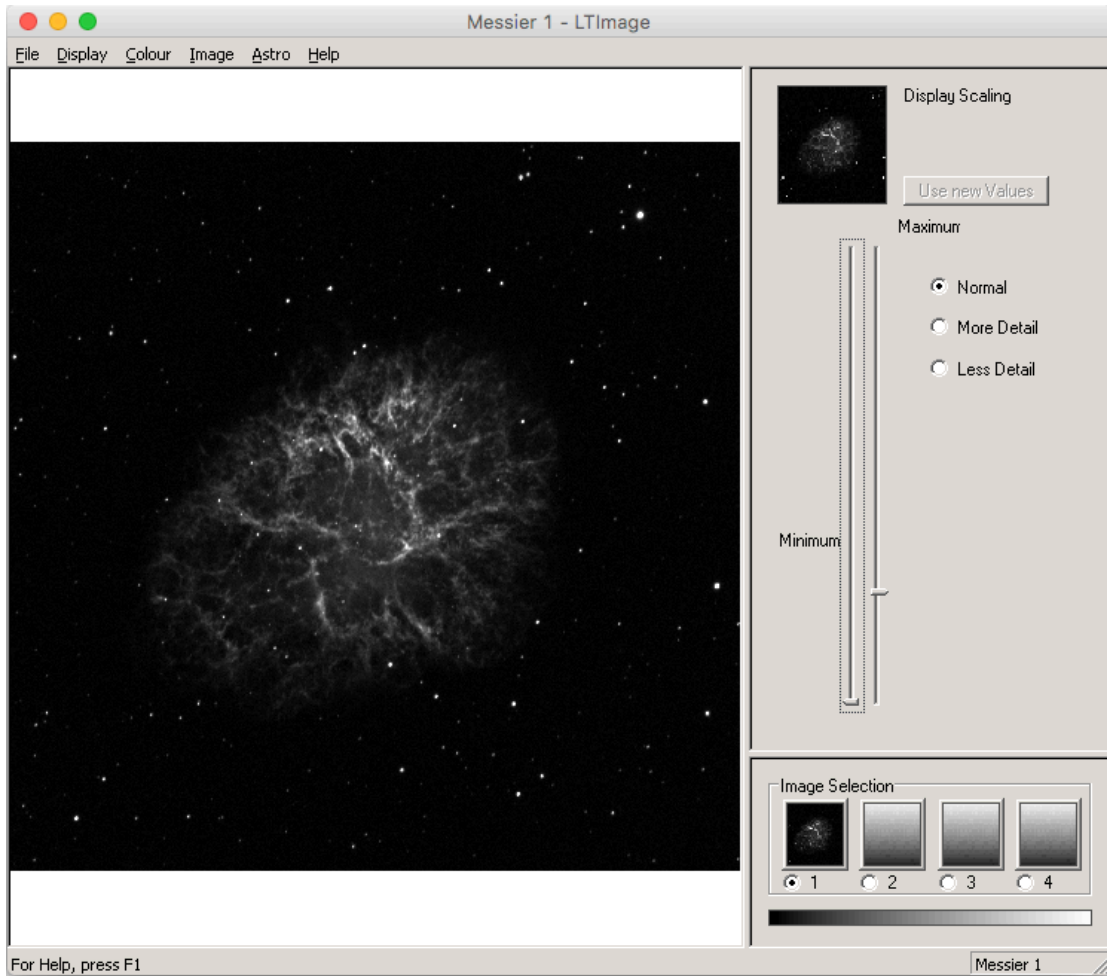
3. Adjust The Maximum Control

Adjusting the controls that have appeared will adjust how your image is displayed on the screen. The minimum slider will adjust how dark the dark areas are, whilst the maximum slider will adjust how bright the bright areas are.

In this case we are only interested in making the bright areas brighter so we slide the maximum bar downwards. In doing so you'll notice that our image has not yet changed, although the smaller preview box has.



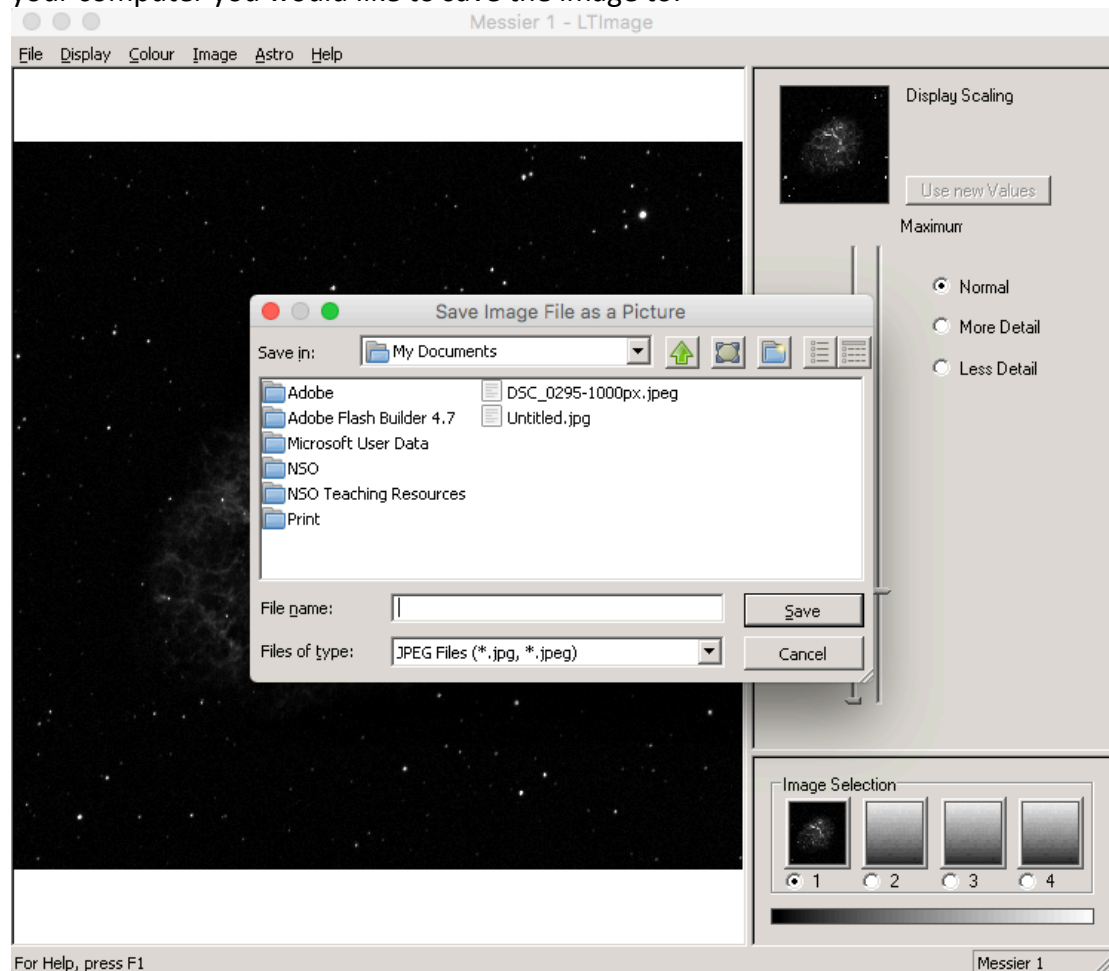
This preview box shows what our adjustments would do to our image, but if we want to go ahead and accept these changes we need to click the button labelled 'Use new values'.



4. Save Your Image

Once you are happy with how your image looks you may wish to save it in a format that allows you to print or email it. This is done by selecting 'File' from the options at the top of the window, followed by 'Save Picture'.

This will open a dialogue box allowing you to name your picture and select where on your computer you would like to save the image to.



As you can see, this is saving the file as a JPG, which can be opened in other computer programs, printed or emailed.